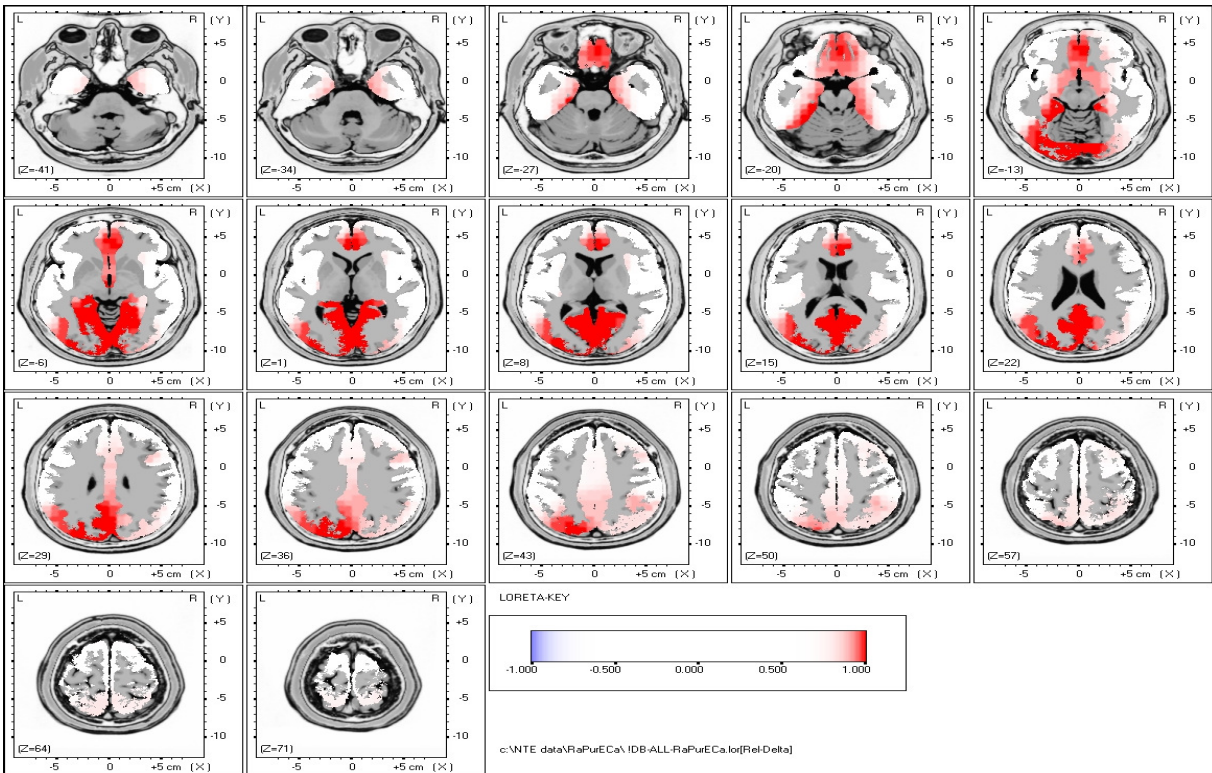
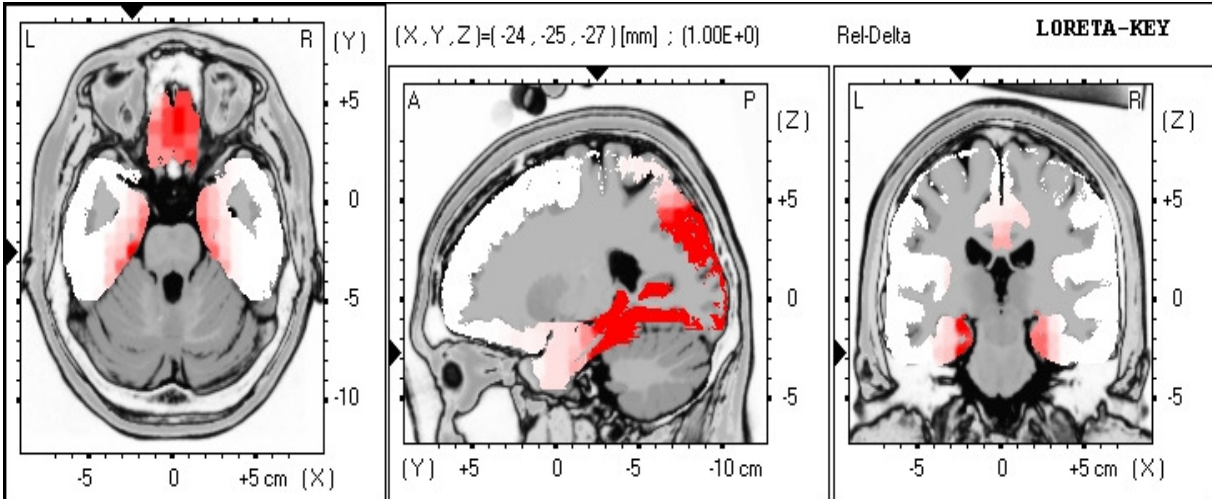


# Eureka Database LORETA

## Relative Power Delta (2-3.5 HZ)

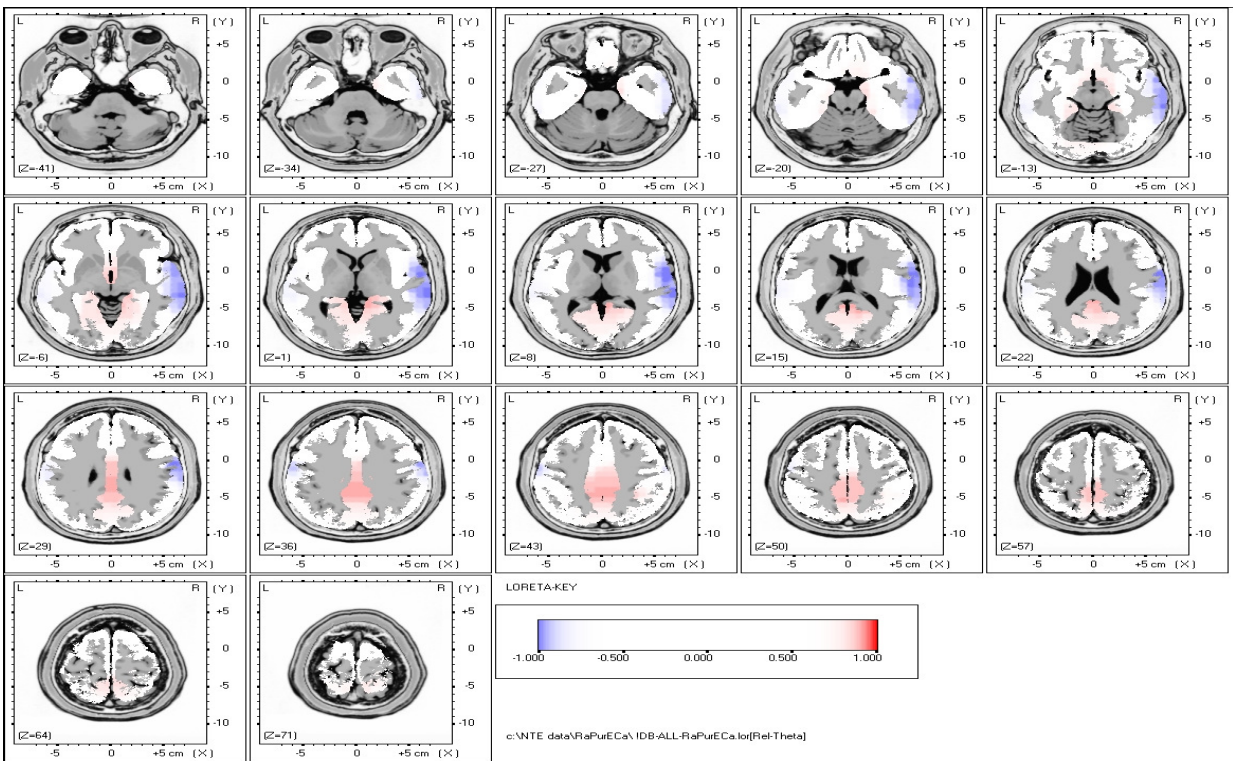
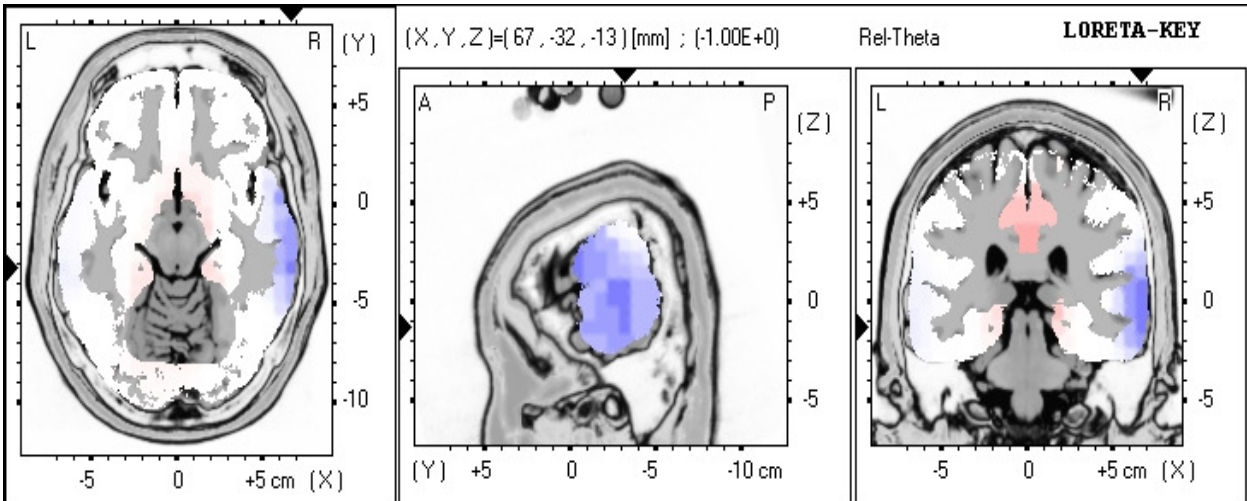
Brodmann area 35 Parahippocampal Gyrus  
Limbic Lobe



# Eureka Database LORETA

## Relative Power Theta (4-7.5 HZ)

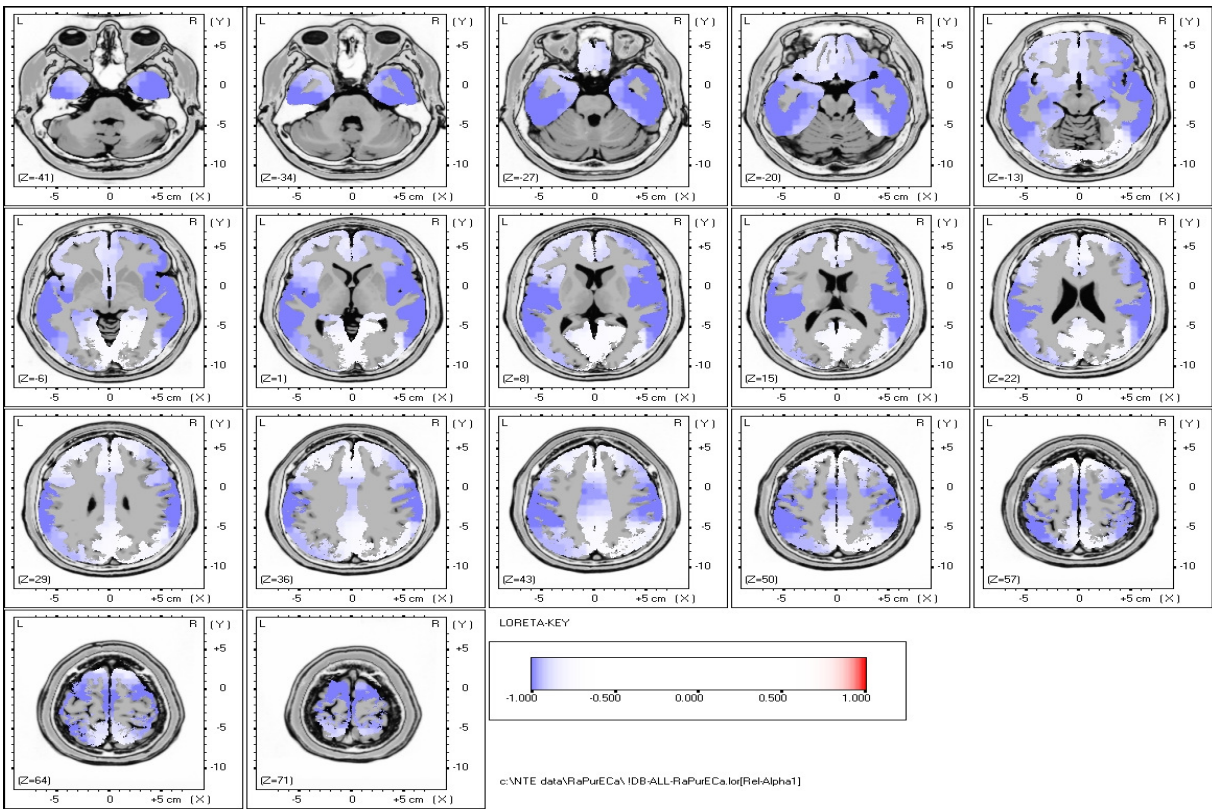
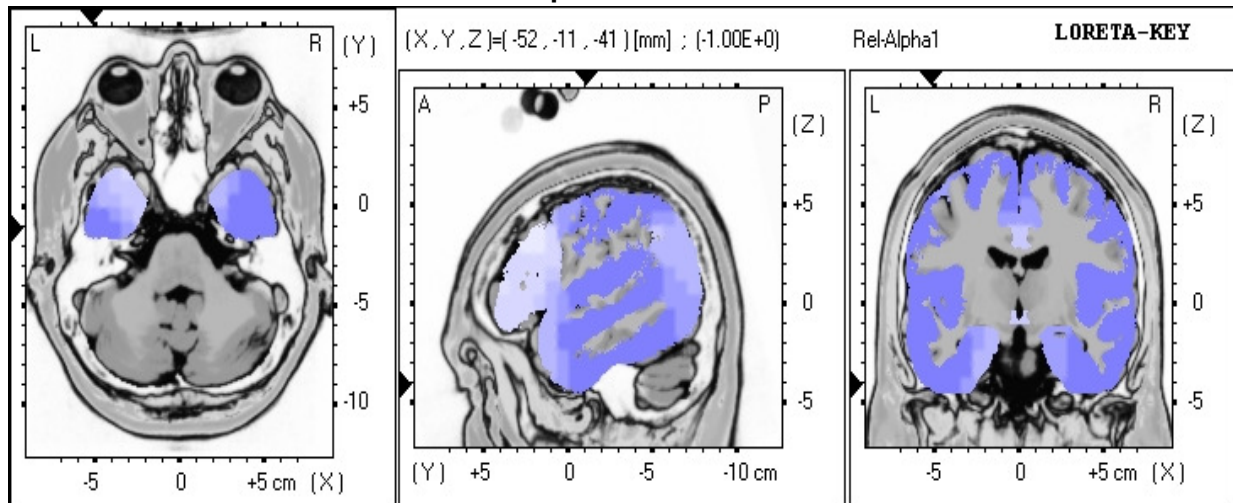
Brodmann area 21 Middle Temporal Gyrus  
Temporal Lobe



# Eureka Database LORETA

## Relative Power Alpha 1 (8-10 HZ)

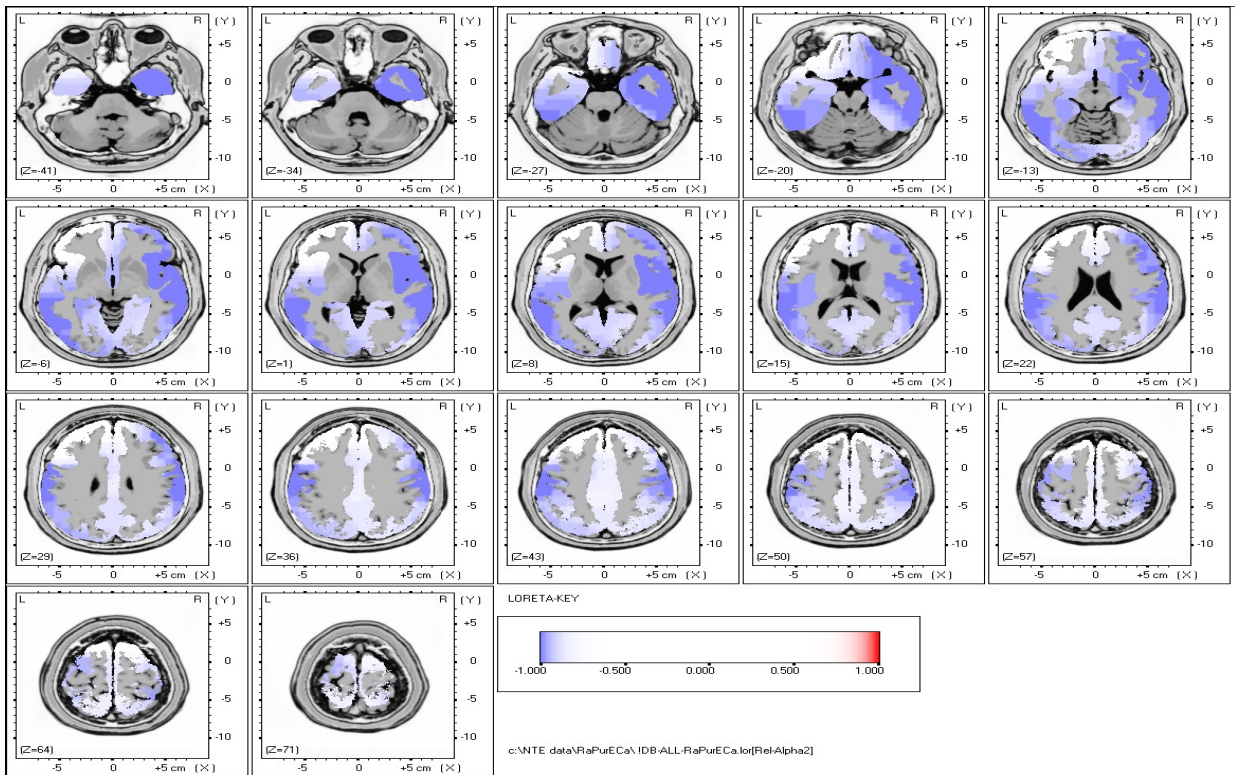
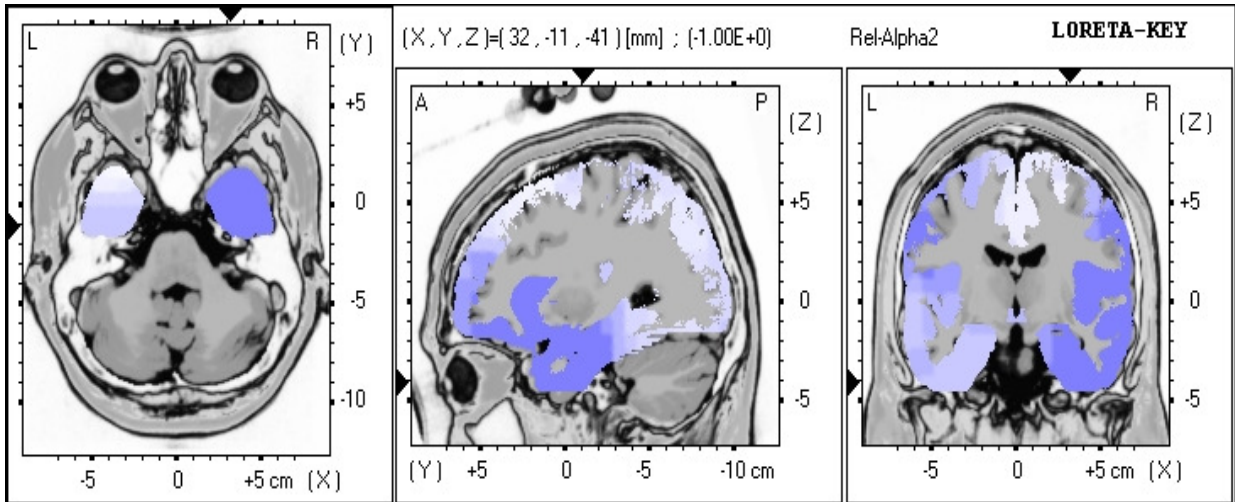
Brodmann area 20 Inferior Temporal Gyrus  
Temporal Lobe



# Eureka Database LORETA

## Relative Power Alpha 2 (10-12 HZ)

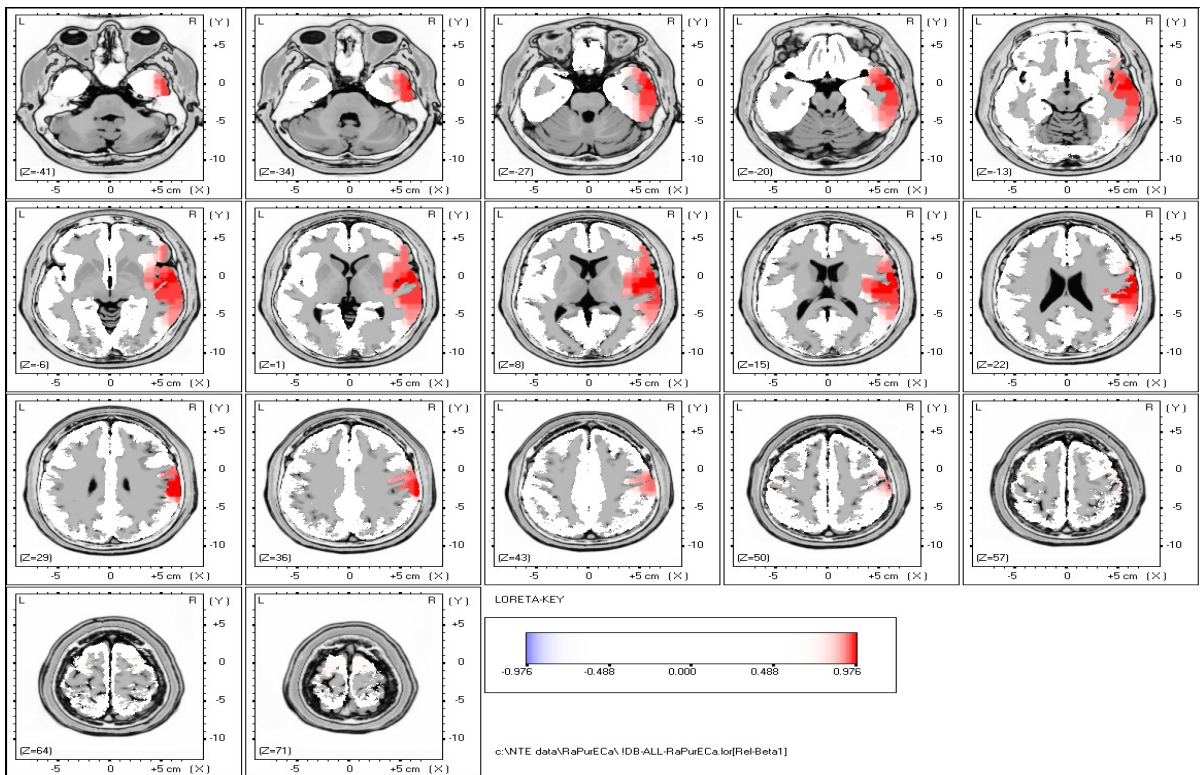
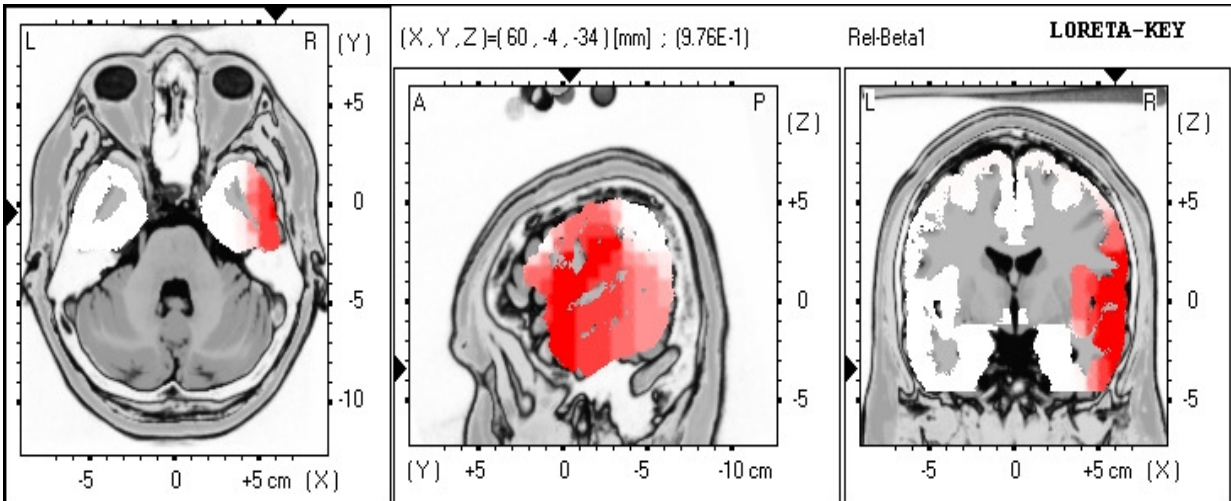
Brodmann area 20      Uncus  
Limbic Lobe



# Eureka Database LORETA

## Relative Power Beta 1 (12-16 HZ)

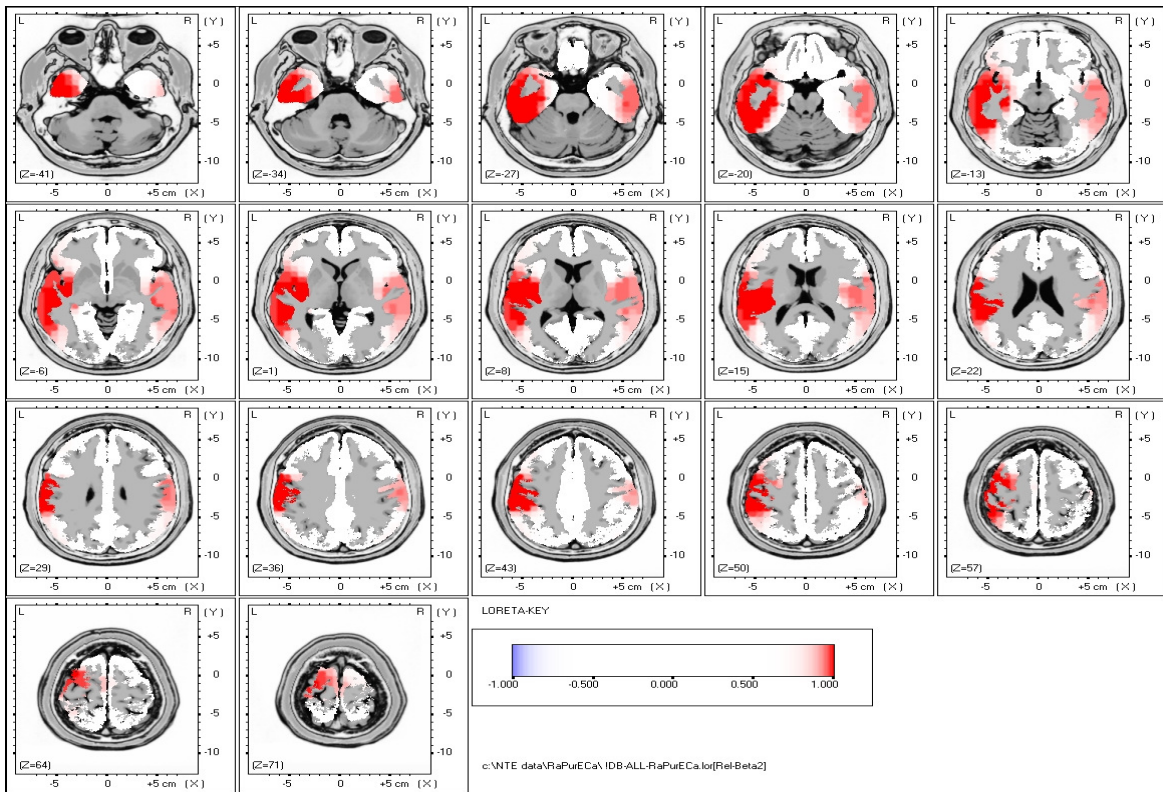
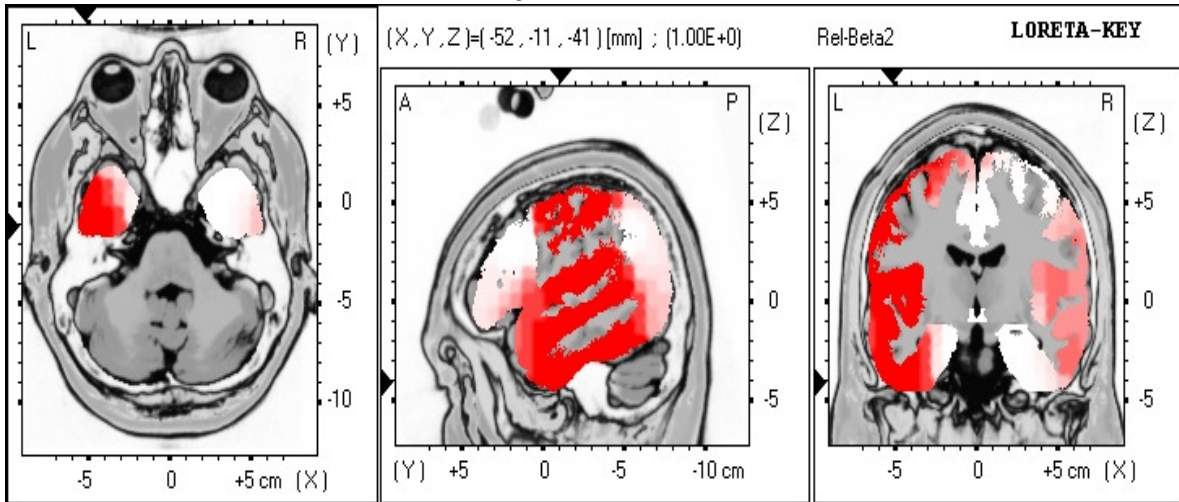
Brodmann area 20 Fusiform Gyrus  
Temporal Lobe



# Eureka Database LORETA

## Relative Power Beta 2 (16-20 HZ)

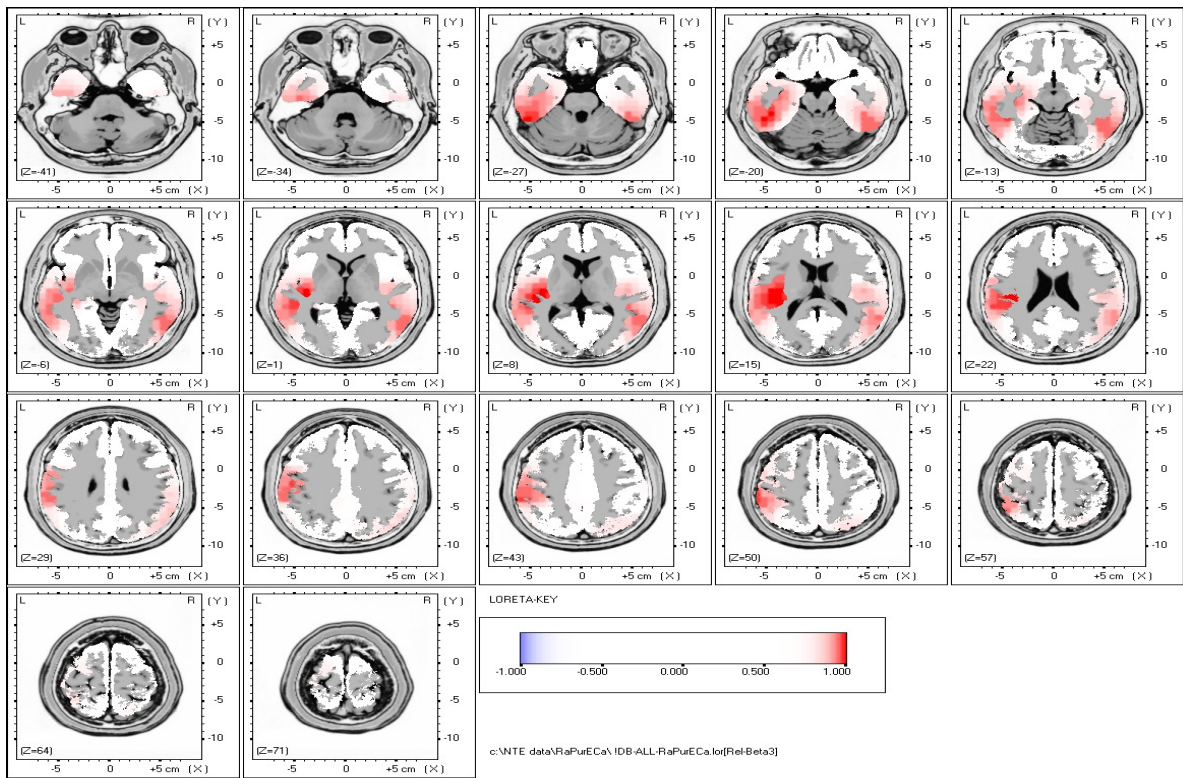
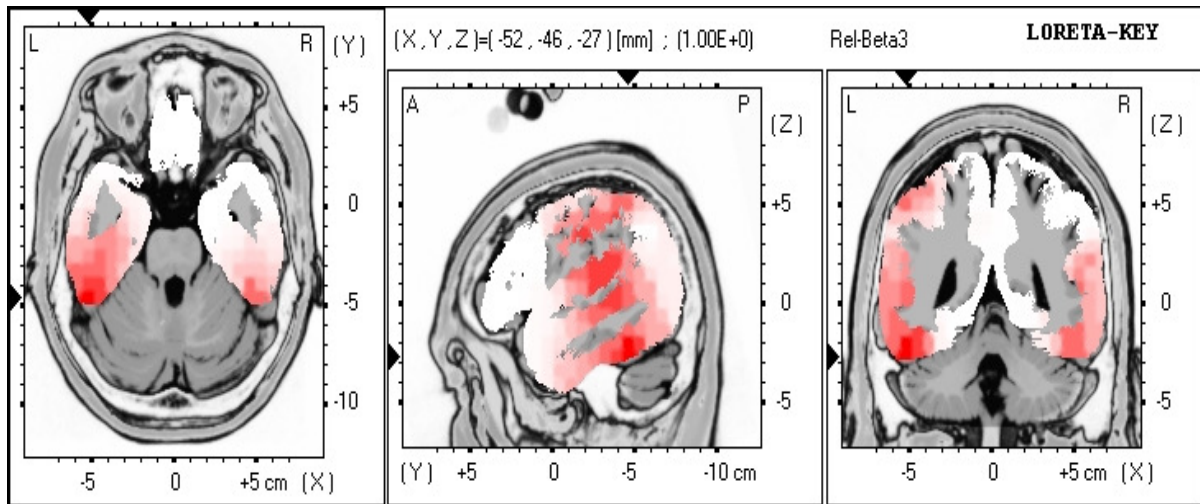
Brodmann area 20 Inferior Temporal Gyrus  
Temporal Lobe



# Eureka Database LORETA

## Relative Power Beta 3 (20-24 HZ)

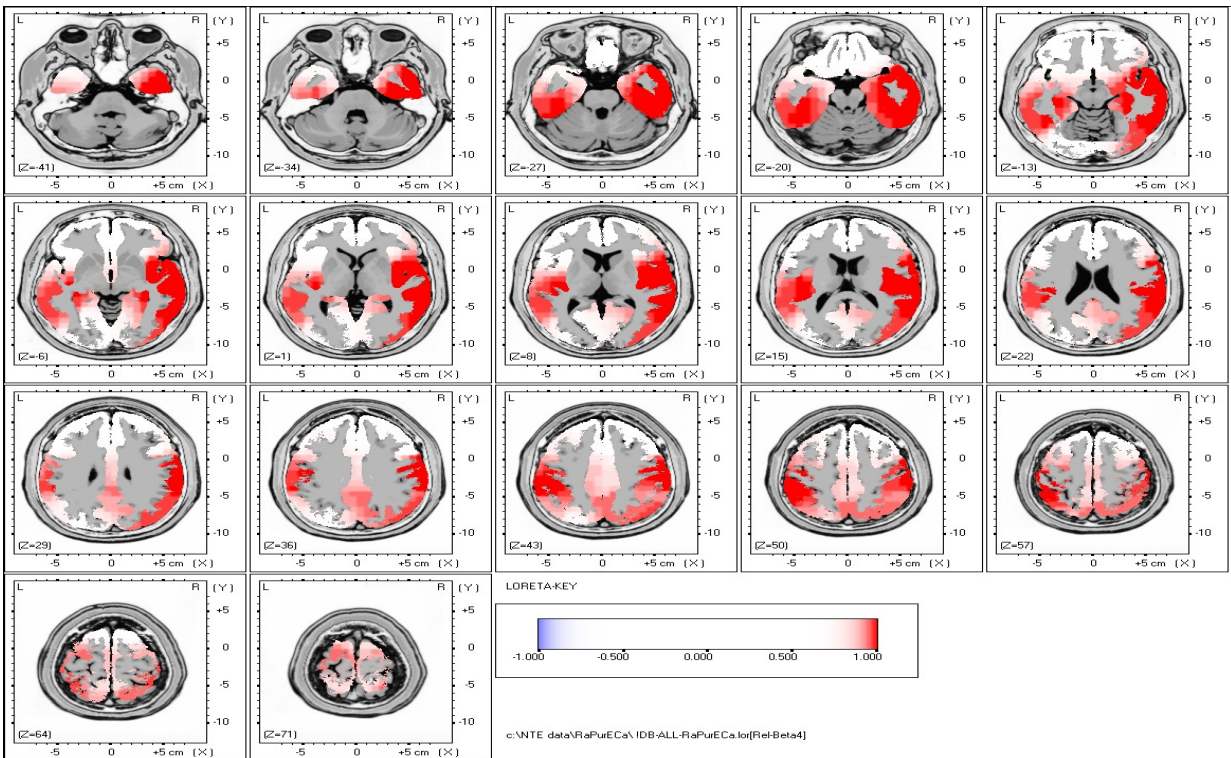
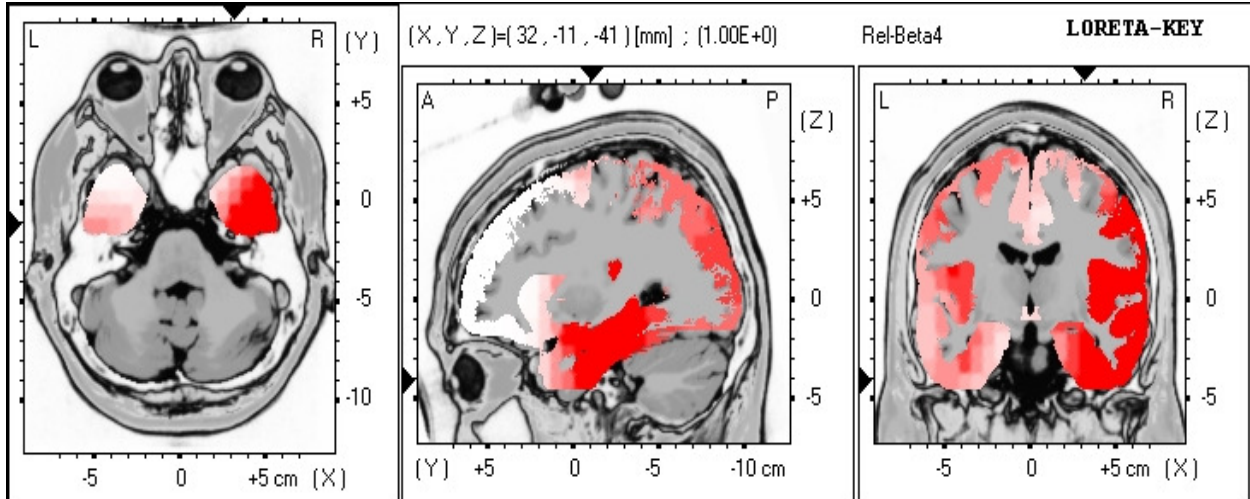
Brodmann area 37 Fusiform Gyrus  
Temporal Lobe



# Eureka Database LORETA

## Relative Power Beta 4 (24-28 HZ)

Brodmann area 20      Uncus  
Limbic Lobe





# Eureka Database LORETA

## Relative Power Beta 5 (28-32 HZ)

Brodmann area 20      Inferior Temporal Gyrus  
Temporal Lobe

